

LOCTITE®



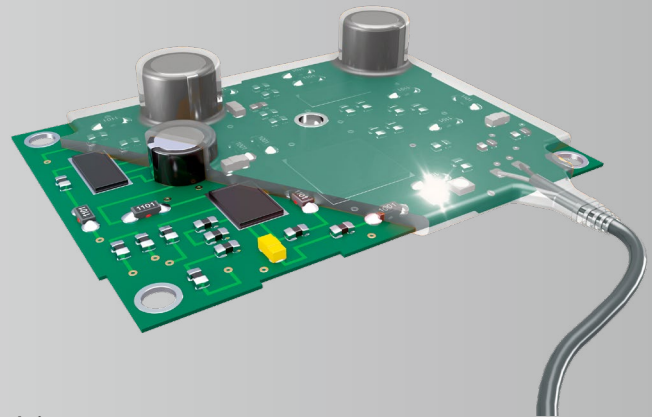
Low Pressure Molding for Medical Devices

LOCTITE® PA 6951™

LOCTITE® PA 6732™

LOCTITE® PA 6682™

- Protection and encapsulation
- Stream-lined product design
- Faster cycle times, lower cost
- One step processing
- Improved strain relief
- Available in amber, clear and translucent white



Applications include surgical tools, sensors, wearables and other medical equipment.

These new LOCTITE® products for medical devices have been tested to Henkel's protocols based upon ISO-10993 biocompatibility standards, with certificates available on request.





LOCTITE® Low Pressure Molding offers a gentle encapsulation process with adhesive molding compounds to achieve the ultimate seal and robust “molded-on protection.”

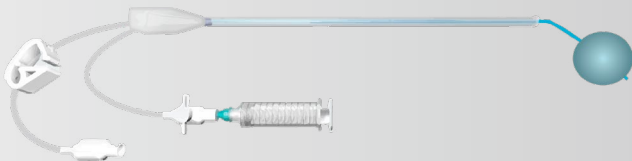
For more information, contact us at industrials@henkel.com or visit <https://henkel-adhesives.com/lowpressuremolding>

KEY TECHNICAL PROPERTIES:	LOCTITE® PA 6951™	LOCTITE® PA 6732™	LOCTITE® PA 6682™
Base	Polyamide	Polyamide	Polyamide
Color	Translucent white	Amber	Clear
Service Temperature (°C)	5-100	-40 to 140	-25 to 105
Viscosity at 210°C cP	50,000*	3,200	3,200
Shore Hardness	95A	90A	90A
Tensile break strength (N/mm ²)	28	6	7.0
Elongation at break (%)	550	400	600

*Viscosity at 255°C=50,000 cP

KEY TECHNICAL PROPERTIES FOR APPLICATOR:

Application System	Extruder or Melt Tank with Gear Pump
Typical Application Temperature	220°C to 250°C
Application Parameters	System Dependent



EUROPE, INDIA, MIDDLE EAST, AFRICA

Henkel AG & Co. KGaA
Henkelstraße 67
40589 Düsseldorf
Germany
Tel: +49 211 7970
www.henkel-adhesives.de

ASIA-PACIFIC

Building 7 & Building 6
The Springs Center
No.99 Jiang Wan Cheng Road
Yang Pu District
Shanghai 200438
China
Tel: +86-21-2891-8000
<http://www.henkel.cn>

AMERICAS

Henkel Corporation
One Henkel Way
Rocky Hill, CT 06067
U.S.A.
Tel: 1.800.LOCTITE (562.8483)
Tel: 860.571.5100
na.henkel-adhesives.com/medicaladhesives

Henkel Corporation
14000 Jamboree Road
Irvine, CA 92606
U.S.A.
Tel: 714.368.8000
www.henkel-adhesives.com

